

M51 Series

Electronic Mortise Lock



Description

The M51 electronic lock is a high-performance entrance lock designed for commercial and high-end residential applications, combining intelligent electronic access control with the proven durability of the DD Series mortise lock body. Engineered for security, convenience, and long-term reliability, it provides a seamless balance between modern technology and traditional mechanical strength.



Built to meet ANSI/BHMA A156.13 standards for mortise locks and ANSI/BHMA A156.25 standards for electrified locking devices, the M51 delivers dependable performance under demanding daily use. The lock supports multiple access methods, offering flexible and secure entry management for offices, apartments, hospitality, and institutional projects.

Ideal for offices, apartments, hotels, mixed-use developments, and other access-controlled environments, the M51 electronic lock is well suited for applications requiring enhanced security, convenient user management, and durable commercial-grade performance. Its combination of electronic functionality and heavy-duty mortise construction makes it an excellent solution for both new construction and retrofit projects.

Application

- Office buildings
- Apartments & multifamily housing
- Hotels & hospitality projects
- Mixed-use developments
- Condominium entrances
- Student housing
- Senior living facilities
- Access-controlled interior openings
- Retrofit and new construction projects

Certification & Compliance

	<p>Lock body certified with ANSI/BHMA A156.13 Grade 1 function, strength and security. Tested over 1,000,000 cycles.</p>
	<p>UL/cUL listed-up to 3 hours fire rating for mortise lock body.</p>

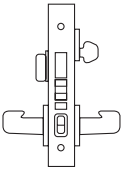
Advantages

- Combines electronic access control with heavy-duty mortise lock security
- Built on the proven DD Series mortise lock platform
- Meets ANSI/BHMA A156.13 and A156.25 standards
- Multiple access methods of fingerprint, PIN code, RFID credential, and mechanical key override
- Mobile access functionality included in reader
- Fast and convenient keyless entry operation
- Commercial-grade durability for high-traffic applications
- Smooth and reliable lever operation
- Enhanced security and user management convenience
- Reversible handing for installation flexibility
- Stainless steel construction for long-term performance
- Tempered glass touch screen
- Clean architectural design compatible with modern interiors
- Four through-bolts reinforce the trim for enhanced security and vandal resistance
- Applicable for metal or wood doors

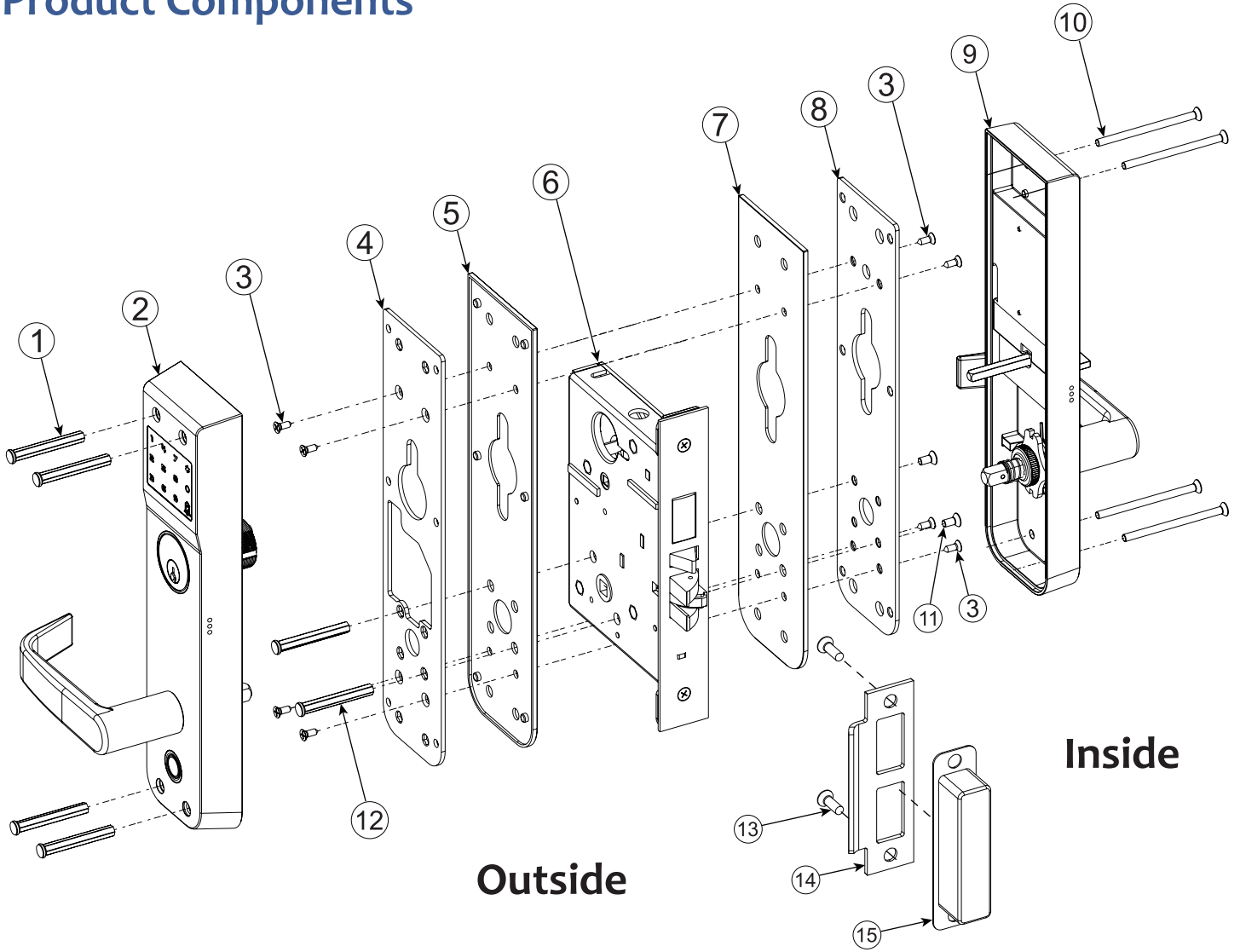
Specifications

Door preparation	ANSI/BHMA A156.115 or A156.115W
Door thickness	For doors 1-3/4" (45mm) to 2-1/4" (57mm) thick standard
Stile	4-1/2" (114mm) minimum stile
Backset	*Standard backset 2-3/4" (70mm)
CTC distance	Lever to cylinder center distance 3-7/8" (98mm)
Function	ANSI F20
Lock case	SS304, thickness 3/32"
Latch bolt	SS303, A156.13 Grade 1 latch bolt projection 3/4", 2 pcs anti-friction
Auxiliary latch bolt	SS304, 3/8" projection, non-handed
Dead bolt	17-4PH stainless steel, A156.13 Grade 1 dead bolt projection 1"
Cylinder	Φ1-1/8" cylinder, C28000 brass, 6 pin, 3 keys, satin nickel face
Strike	SS304, 4-7/8" ANSI curved lip strike, thickness 1/8" (3mm)
Electronic trim	SS303 cast escutcheon trim
Touch screen	Tempered glass
Battery	4 AA batteries for 2 years normal life
Emergency power	USB interface
Access methods	Finger print, NFC, PIN code, key
Hand	Field reversible latch bolt
Finishes	US32D

Functions & Configuration

PICTURE	ANSI NO.	FUNCTION	DESCRIPTION	LEVER	CYLINDER	THUMB TURN	EMERG TURN
	F20	Apartment Corridor Door Lock	Lever latch both sides; outside lever disable by non-key means. Deadbolt by key outside or turn inside; key operates both bolts. Inside lever retracts both bolts; outside stays locked. Latch deadlocks when disabled or deadbolt thrown; re-enabled when deadbolt is retracted.	✓	✓	✓	

Product Components



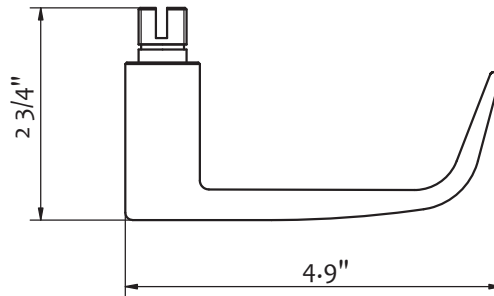
No.	Description	No.	Description
1	Guide pin -trim	9	Inside trim
2	Outside trim	10	PH #8-32+2-1/2" screw
3	Screw-base plate & gasket	11	Screw-Guide pin for base plate
4	Outside base plate	12	Guide pin -base plate
5	Outside gasket	13	PH#12-24x3/4" + #12 wood screw
6	Lock body	14	Strike
7	Inside gasket	15	Strike box
8	Inside base plate		

Trim Details



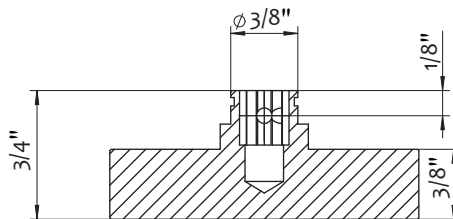
Trim type	Escutcheon trim
Material	SS303 cast
Thickness	1/8"~3/8" (3.6~9.6mm)
Width	2-7/8" (78mm)
Height	11-1/16" (281mm)
Projection	2-1/16" (52mm)

Lever Options



M51A10 lever
SS303 solid cast
US32D

Thumb Turn Options



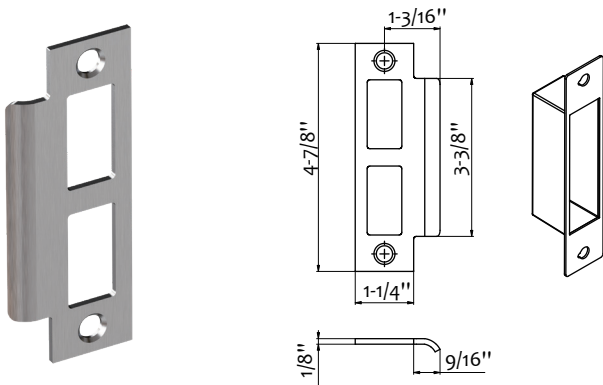
T-thumb turn M30A5
1-3/4"×3/8" (44×10mm)
SS303 cast US32D

Cylinder Details



A13 cylinder
Φ1-1/8"×1-13/16" (Φ29×38mm)
C28000 brass body, 6 pins
Satin nickel cylinder face
3 pcs of C26000 brass keys, nickel plated.

Strike Details



ST-04 *Standard

- 4-7/8" (124mm) ANSI curved lip strike SS304.
- 1-3/16" (30mm) curved lip from center of screw holes to end of lip.
- Strike box 4-3/4" x 1-1/8" x 1" (120 x 29 x 25mm), PA66

Installation dimensions

